

# EVERYDAY CYCLING IN GLASGOW CITY CENTRE

## an opportunity

The Glasgow City Council (City Centre)(Traffic Management) Order 2010 (Variation No16)(Union Street)Order 201\_ 1st ISSUE:

This Order will remove parking along the west side of Union Street.\*

**A two way segregated cycleway** could then be included on this part of the road between **Gordon Street** and **Argyle Street**.

If the Order is also modified to allow cyclists to continue to ride westward along **Argyle Street** (under the Hielanman's Umbrella), entrances to **Central Station** would be easy to reach by bike.

\* The relocation of the taxi rank, in the Order, and the existing disabled parking would need to go to the east side of Union Street, or an alternative location.

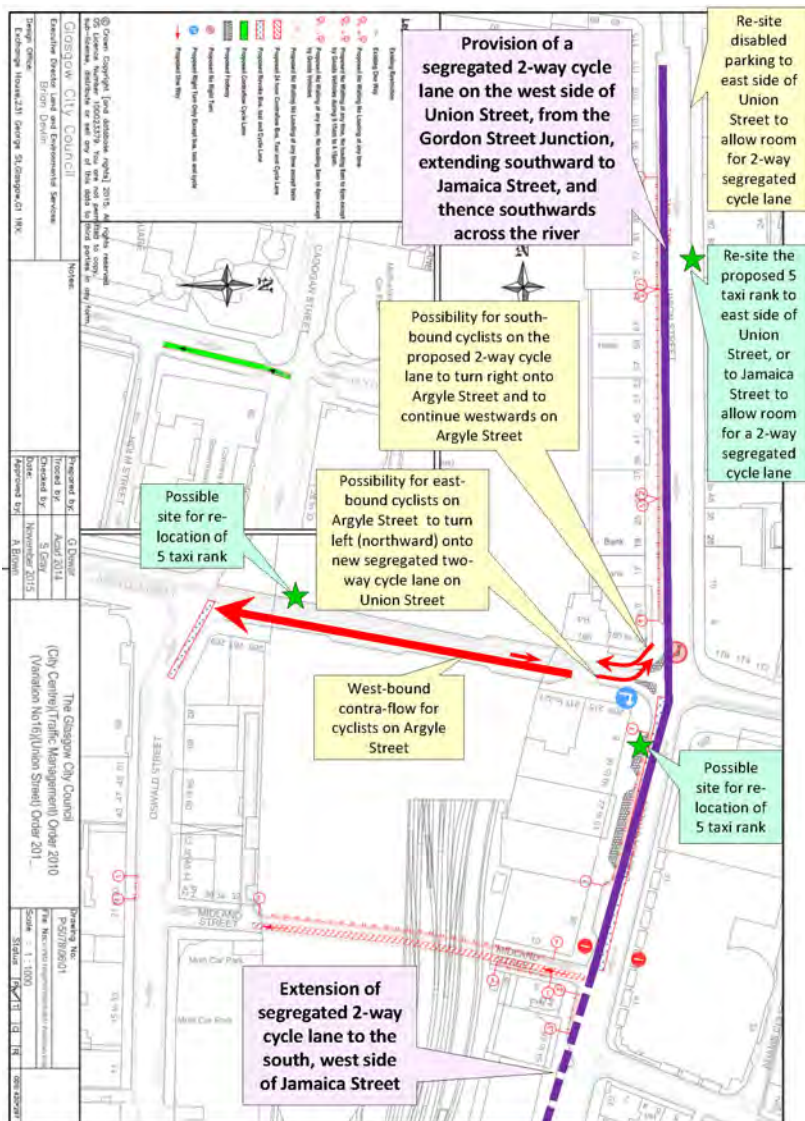
The Order also removes the bus contra flow on **Jamaica Street** so the cycleway could continue, to connect with the popular **Clydeside** pathway.



### Everybody benefits from:-

- Safe cycling for all in the busy city centre
- Cyclists connected well with Central Station
- Union Street environment improved for all
- Pedestrians separated from motor traffic
- Local shops and businesses boosted
- Air pollution and noise levels reduced

**Importantly** pedestrians, bus passengers and drivers will see cycling as a possibility, and a healthy enjoyable alternative way for getting around Glasgow. It will demonstrate how people are able to make the whole city more attractive with active travel, as the way to go.



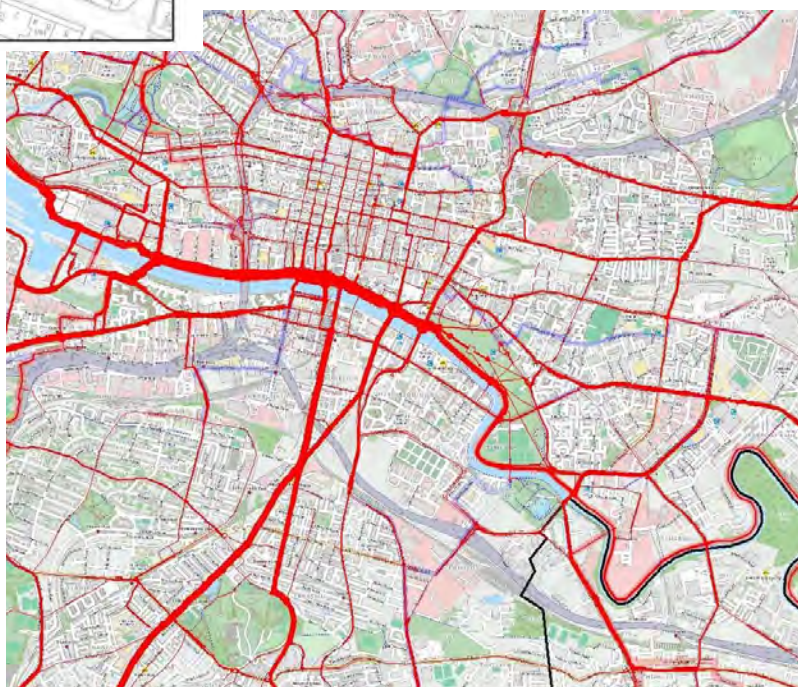
### Glasgow wants to cycle

The red lines on the map show where cyclists (with the Strava app) currently ride. The thicker the line the more cyclists. Those cycling from the south reach the Clyde; and then there are minimal simple ways to ride in the city centre.

### Let cycling flourish in the heart of Glasgow

A safe Union/Jamaica Street cycleway would encourage lots of new or less confident cyclists to help paint the town red.

When this proves successful the cycleway can be continued south across **Glasgow Bridge**, along **Bridge** and **Eglinton Streets** as far as the **Cumberland Road** junction, at the start of the **A77** bus/taxi/cycle lanes.



Open source mapping with cycling heat routes by kind permission of Strava Inc.

PJH 18.02.16

