

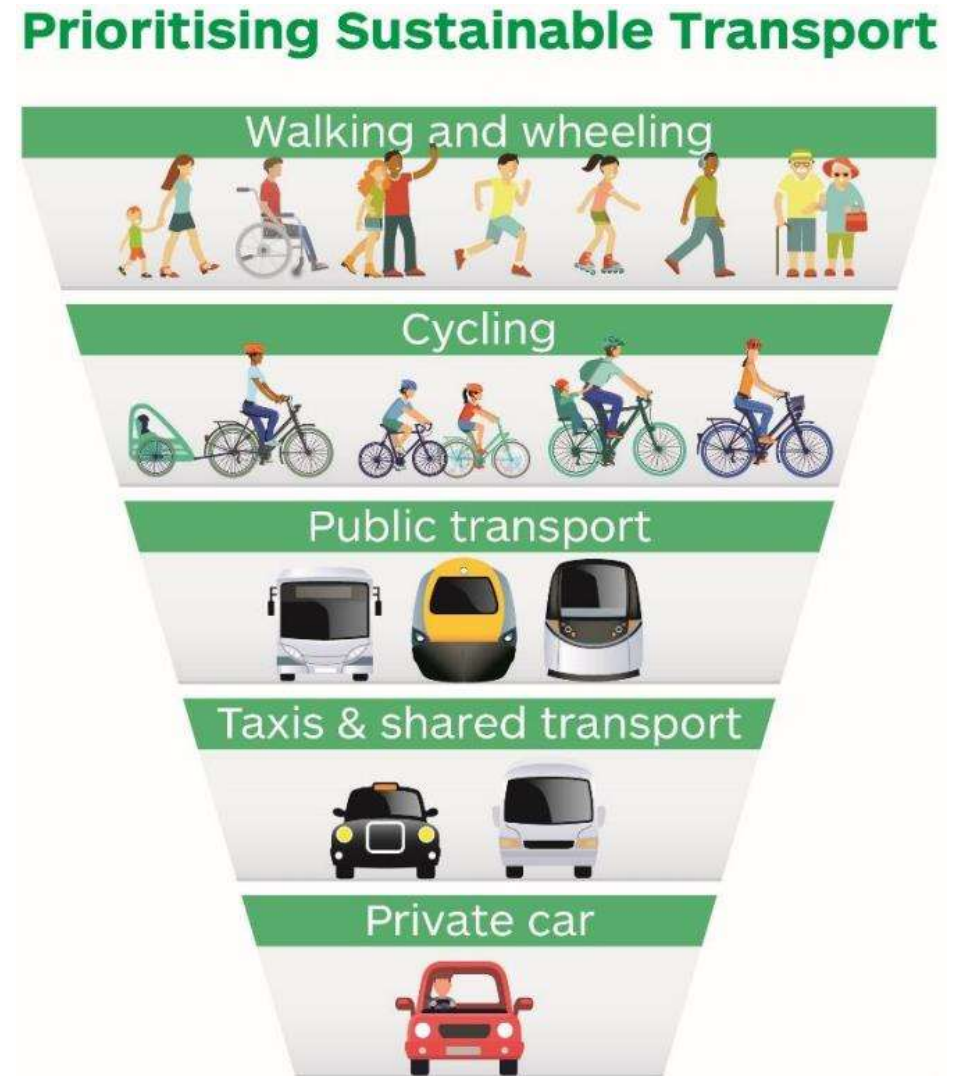
# Strathaven, Stonehouse and the surrounding villages Active Travel Feasibility Study Key Stakeholder Workshop

Ross McNeill and Elliot Bayley

Wednesday 12th May 2021

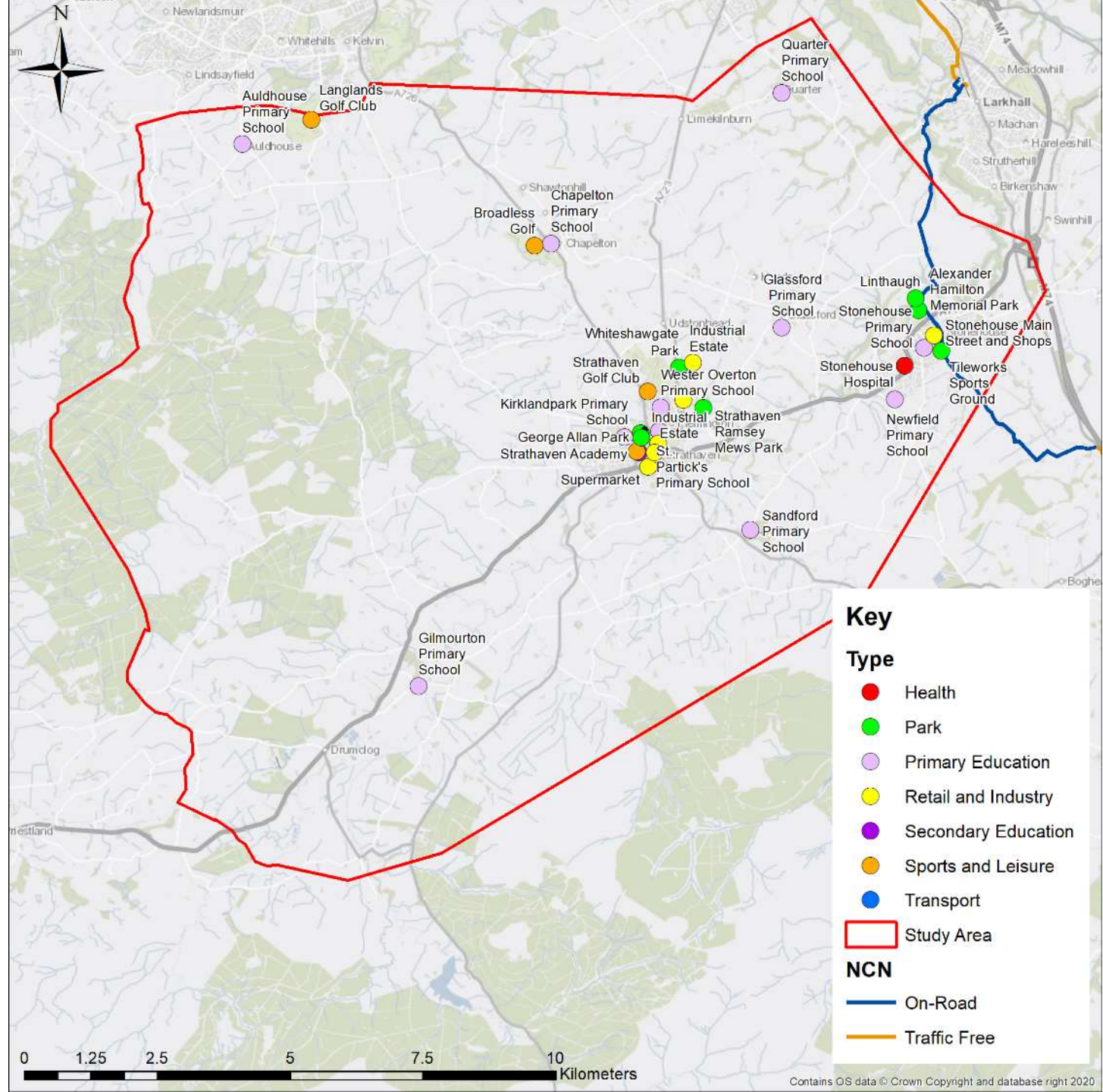
# Workshop Agenda

1. Introductions
2. AECOM Project Summary
3. Engagement and Consultation Summary
4. Future Network Priorities and Proposals
5. Workshop Sessions / Discussions



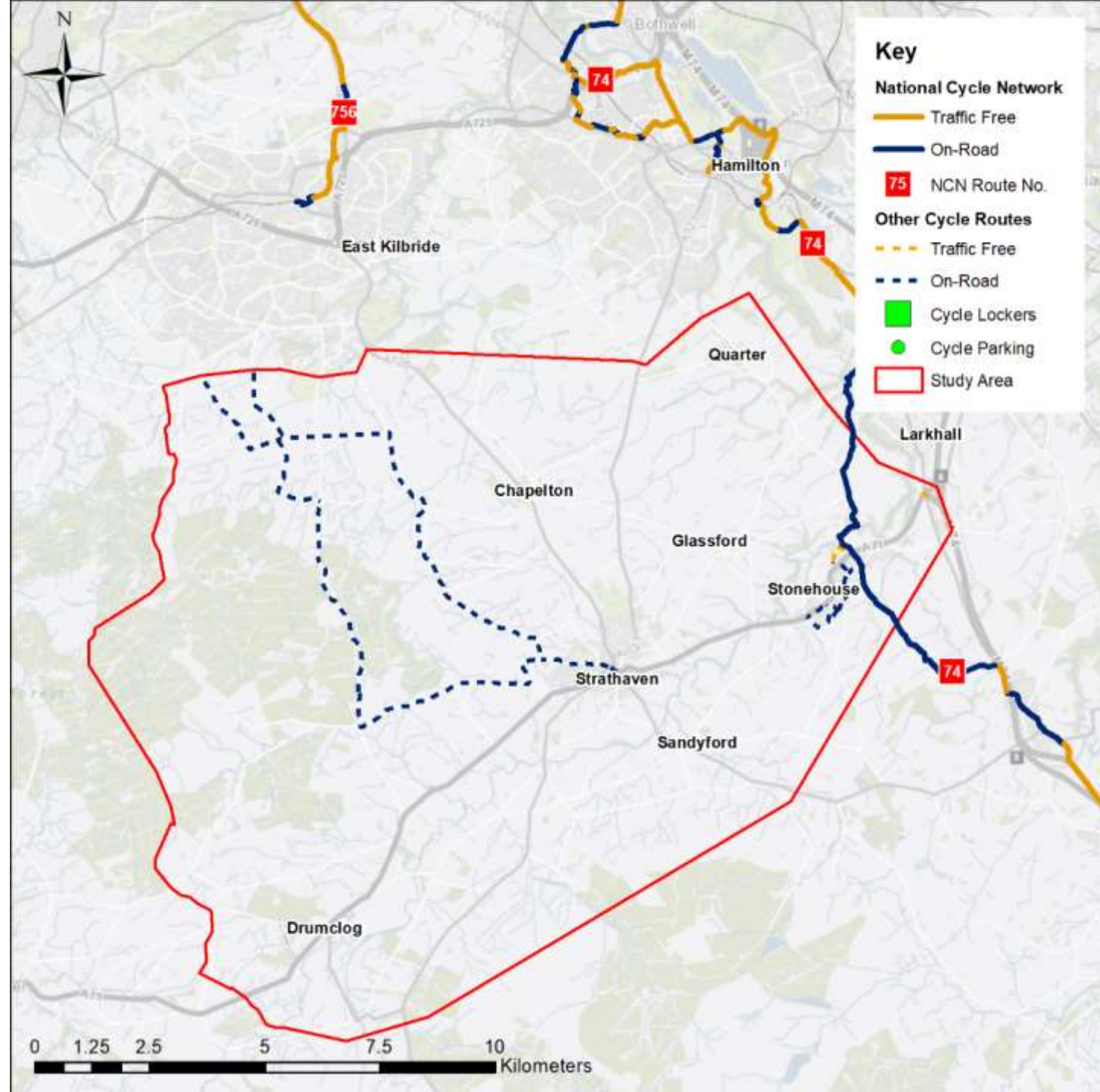
*National Transport Strategy 2 (2020):  
Sustainable Transport Hierarchy*

# Study Area



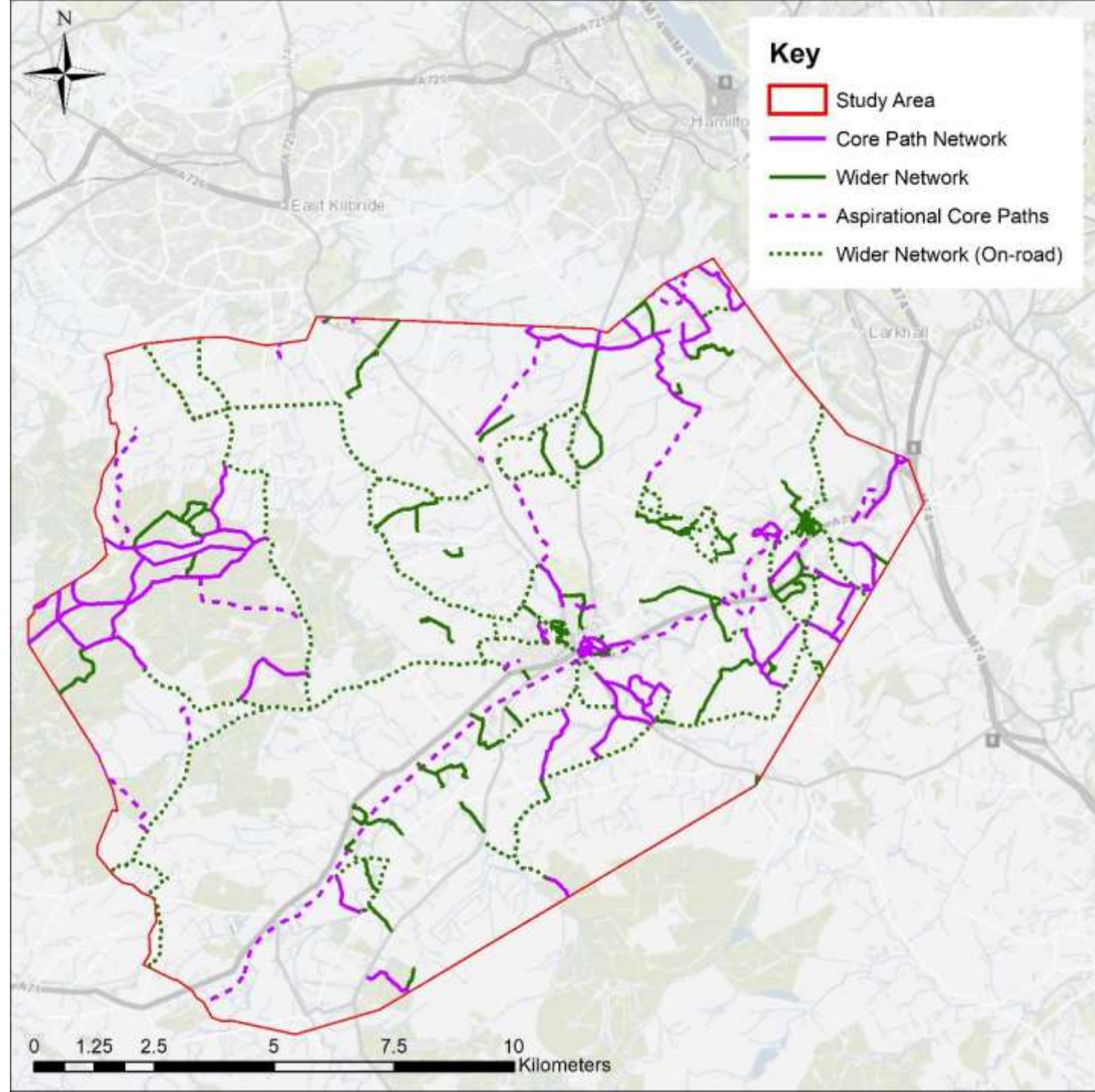
# Existing Cycle Network:

- NCN 74
  - On-road country roads connecting to Larkhall in the north and Kirkmuirhill in the south via the town centre
- Locally signed routes / destinations
  - On-road country roads to the north-west of Strathaven
  - On-road within Stonehouse



# Existing Network: Core Path Network

- Wide ranging network of on-road and off-road core paths
- Aspirational core path links along old rail line between Stonehouse, Strathaven and beyond to the west and the Ayrshire border
- Forest roads and core path network through Whitelee Windfarm



# Project Aims and Approach

## Project Aims:

1. Identify actual and perceived barriers to active travel locally
2. Identify programme of recommendations
3. Undertake engagement and consultation
4. Identification of future proposals

## Project Approach:

- Technical Review
- Public and Stakeholder Engagement
- Network Development and Recommendation:
- Feedback from Stakeholders and the Public and Proposed Network and Priorities

# AECOM Project Update

## Background Review:

- Study Area
- SIMD and Transport Poverty
- Commuting Data
- Key Trip Attractors
- Planned and Future Developments
- Policy Framework
- Current Active Travel Network
- Current Network Use

## Project Deliverables:

- Public Life Survey
- Stakeholder and Public Engagement
- Identification of Future Network Proposals
- Draft Feasibility Report
- Finalised Feasibility Report

# Stakeholder and Community Engagement

The engagement programme included:

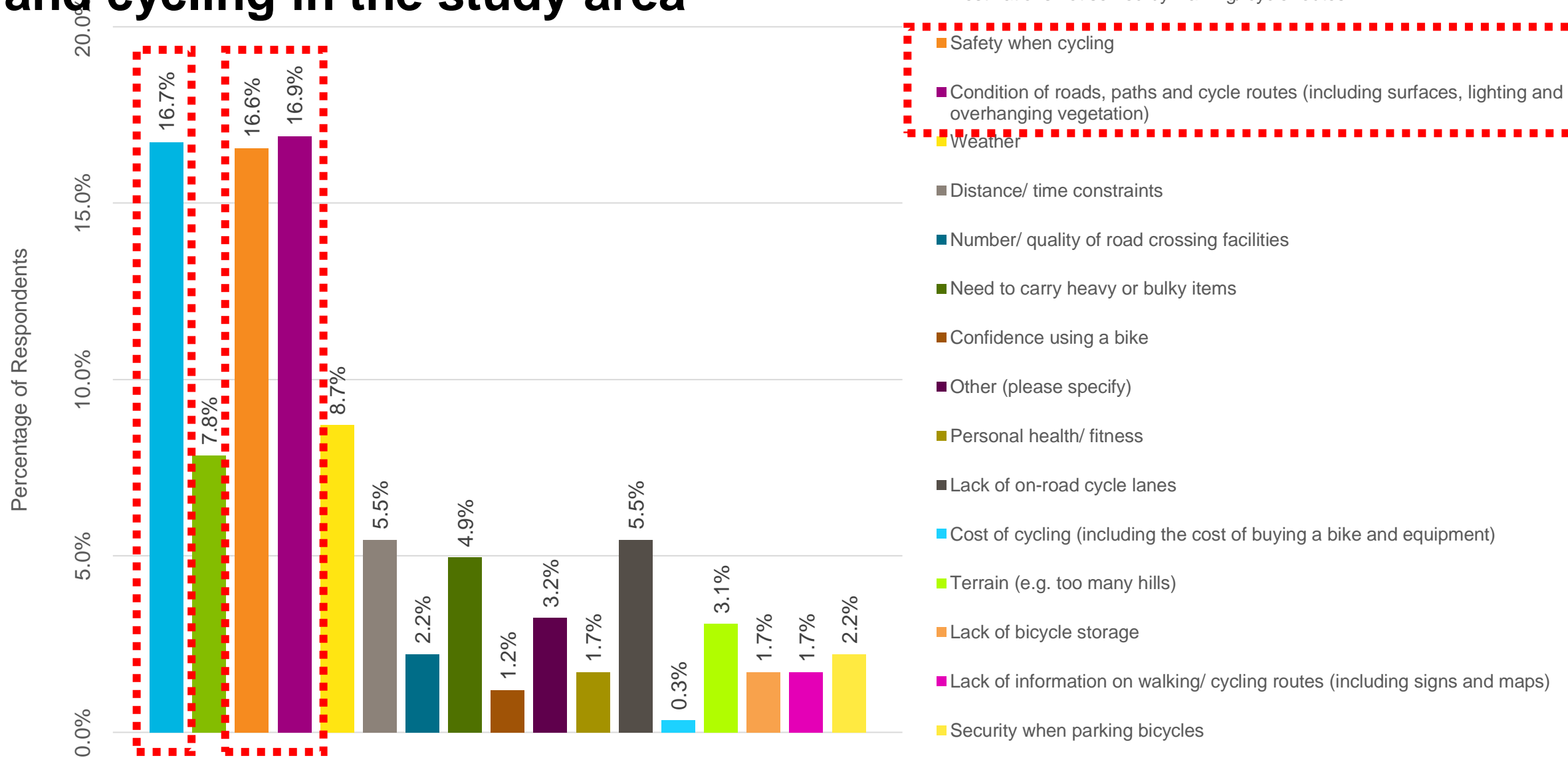
1. An online questionnaire survey, to collate information on local travel (202 responses);
2. An online Placecheck map for location-based comments and ideas (25 responses);
3. Key Stakeholder Workshop and Communications; and
4. Follow-up online consultation on Initial Draft Feasibility Studies (ongoing).

## Top Local Destinations

1. Strathaven Town Centre / Common Green (15.41%)
2. Sainsbury's Strathaven (13.84%)
3. Strathaven Park (4.55%)
4. Aldi Strathaven (4.38%)
5. Strathaven (4.20%)
6. Strathaven Academy / Leisure Centre (3.50%)
7. Larkhall and Shops (2.98%)
8. Stonehouse (2.63%)
9. East Kilbride (2.10%)
10. Hamilton (2.10%)



# Perceived barriers to walking and cycling in the study area



# Extract from Additional Online Survey Comments

- *“More traffic free cycle paths would make a big difference. A lot of people do not feel confident amongst traffic.”*
- *“Lower vehicle speeds and reduced traffic volumes would significantly contribute to achieving a more suitable environment for active travel”*
- *“lack of cycle lanes puts me off cycling. roads too busy and dangerous.”*
- *“Widening the footpath from Sandford to Strathaven to enable a safe cycling lane for children and novice cyclists.”*
- *“Lighting on the path between Sandford and Strathaven would encourage activity day and evening”*
- *“Reducing the speed of traffic coming into/out of Strathaven could be improved by adding traffic calming measures”*
- *“The footpath round Sandford spectacle fall sound be improved.”*
- *“The off-road cycling infrastructure needs to be upgraded to allow for safe, lit and signposted routes for walking and cycling.”*
- *“20mph in town would be a big step towards encouraging active travel as would improving roads and pavements”*

# Placecheck Map Comments

Entries could include:

1. *Things I like;*
2. *Things I don't like; and*
3. *Things we need to work on*



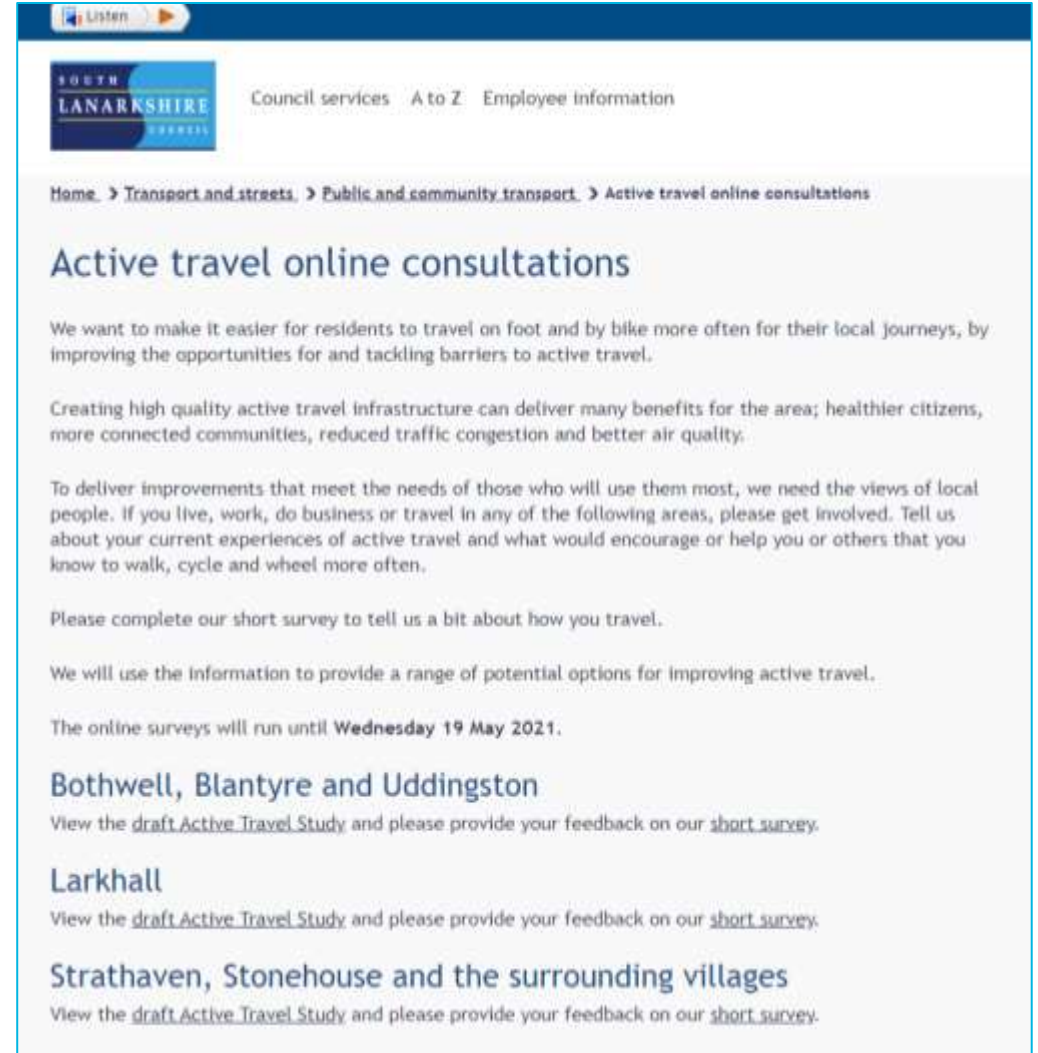
# Current Online Consultation

Draft Feasibility Study and Proposed Network available for download online

Online survey available until 19<sup>th</sup> May 2021 asks for feedback on

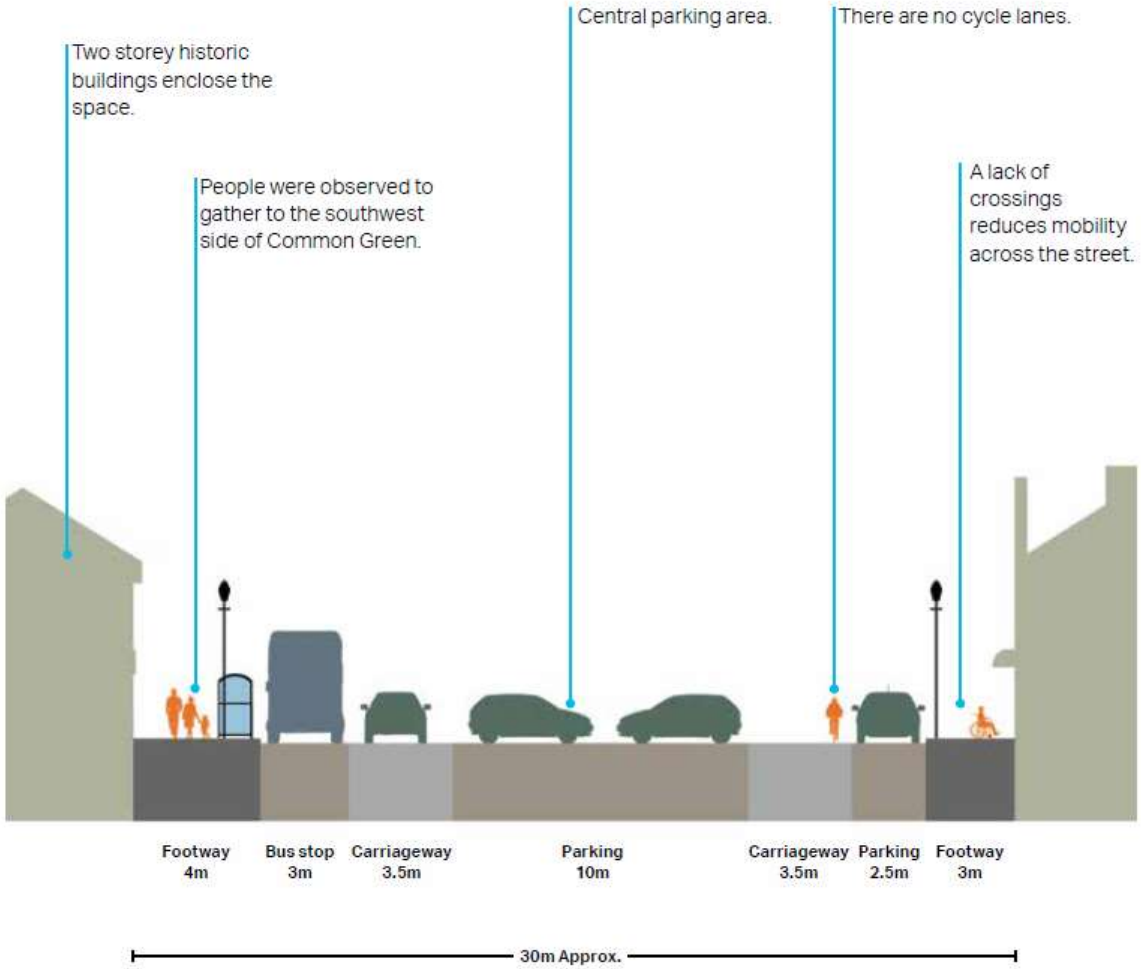
- Proposed Draft Feasibility Study and Proposed Network
- Current travel patterns and restrictions linked to the COVID-19 outbreak

Feedback will be used to inform final Feasibility Study and Proposed Network



The screenshot shows the South Lanarkshire Council website. At the top, there is a navigation bar with a 'Listen' button and the council's logo. Below the logo, there are links for 'Council services', 'A to Z', and 'Employee information'. The main content area has a breadcrumb trail: 'Home > Transport and streets > Public and community transport > Active travel online consultations'. The title of the page is 'Active travel online consultations'. The text explains the council's goal to make it easier for residents to travel on foot and by bike, and asks for feedback on a draft Active Travel Study. It lists three areas: Bothwell, Blantyre and Uddingston; Larkhall; and Strathaven, Stonehouse and the surrounding villages. Each area has a link to view the draft study and provide feedback.

# Public Life Survey: Twelve Quality Criteria Method



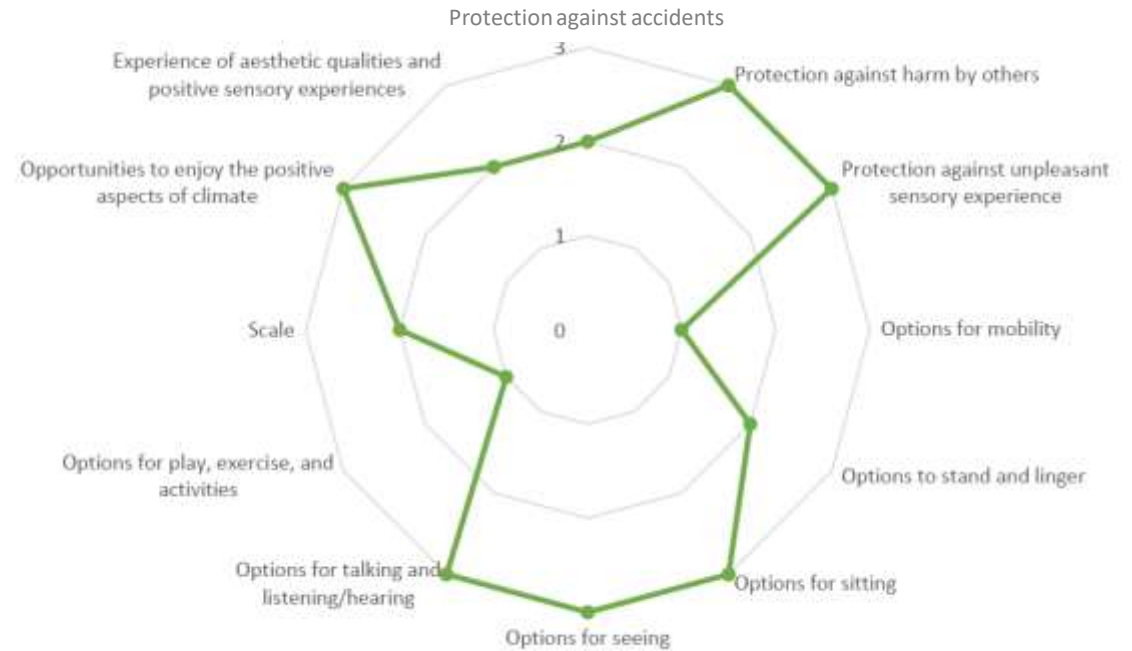
# Public Life Survey: Twelve Quality Criteria Method

## Summary

- Historic setting with high place function but low pedestrian movement function with limited crossing opportunities

## Recommendations:

- Improve mobility with clear pedestrian routes and reduced parking
- Develop cohesive materials palette in keeping with historic setting
- Provide features to encourage play, exercise and activities supporting the town hub function.

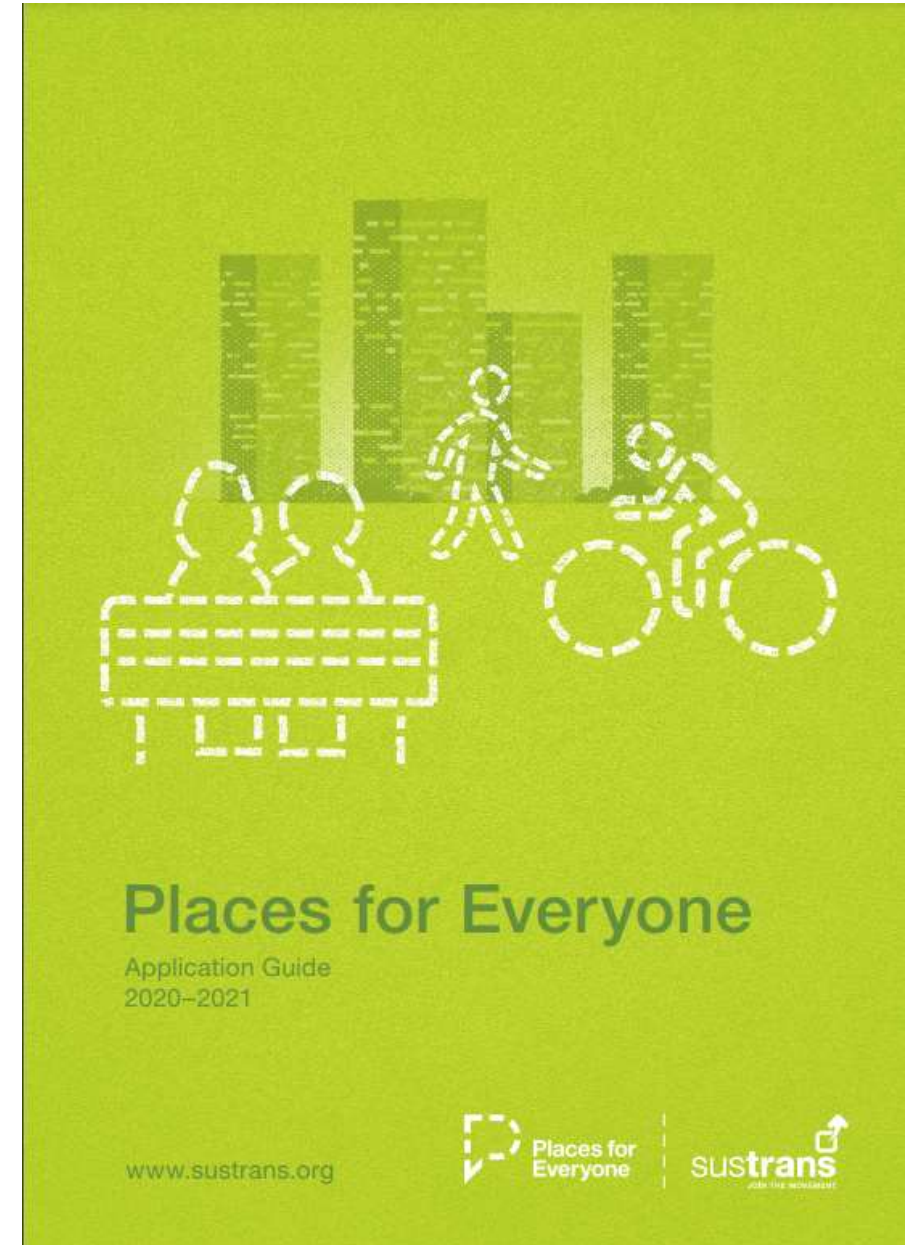


# Sustrans Places for Everyone Funding

The aim of Places for Everyone is to create safer, more attractive, healthier places by increasing the number of trips made by walking, cycling and wheeling for everyday journeys.

## Sustrans Project Funding:

- 100% of design (pre-construction costs)
- 70% match funding for construction



# Sustrans Places for Everyone Design Principles

In order to ensure all projects receiving funding make the largest possible impact, Sustrans has developed the following **design principles** to guide development:

1. Develop ideas collaboratively and in **partnership with communities**
2. Facilitate independent walking, cycling and wheeling **for everyone**, including an unaccompanied 12 year old
3. Design places that provide **enjoyment, comfort and protection**
4. Ensure access for all and **equality** of opportunity in public space
5. Ensure all proposals are developed in a way that is **context-specific** and **evidence-led**
6. Reallocate road space, and restrict motor traffic permeability **to prioritise people walking, cycling and wheeling** over private motor vehicles



# Places for Everyone Design Stages

Stage 0 – Strategic Definition

Stage 1 – Preparation and Brief

Stage 2 – Concept Design

Stage 3 – Developed Design

Stage 4 – Technical Design

Stage 5 – Construction

Stage 6 – Handover & Close Out

Stage 7 – In Use



# Principles of the Proposed Network

**The aim was to develop a plan and identify opportunities which:**

- Address the concerns raised, enabling walking and cycling as a convenient choice for all trip types;
- Support local businesses and the economy;
- Are aligned with best practice in designing people friendly streets and spaces;
- Are in line with policy objectives at all levels of government; and
- Are likely to attract funding and/or take advantage of planned changes.

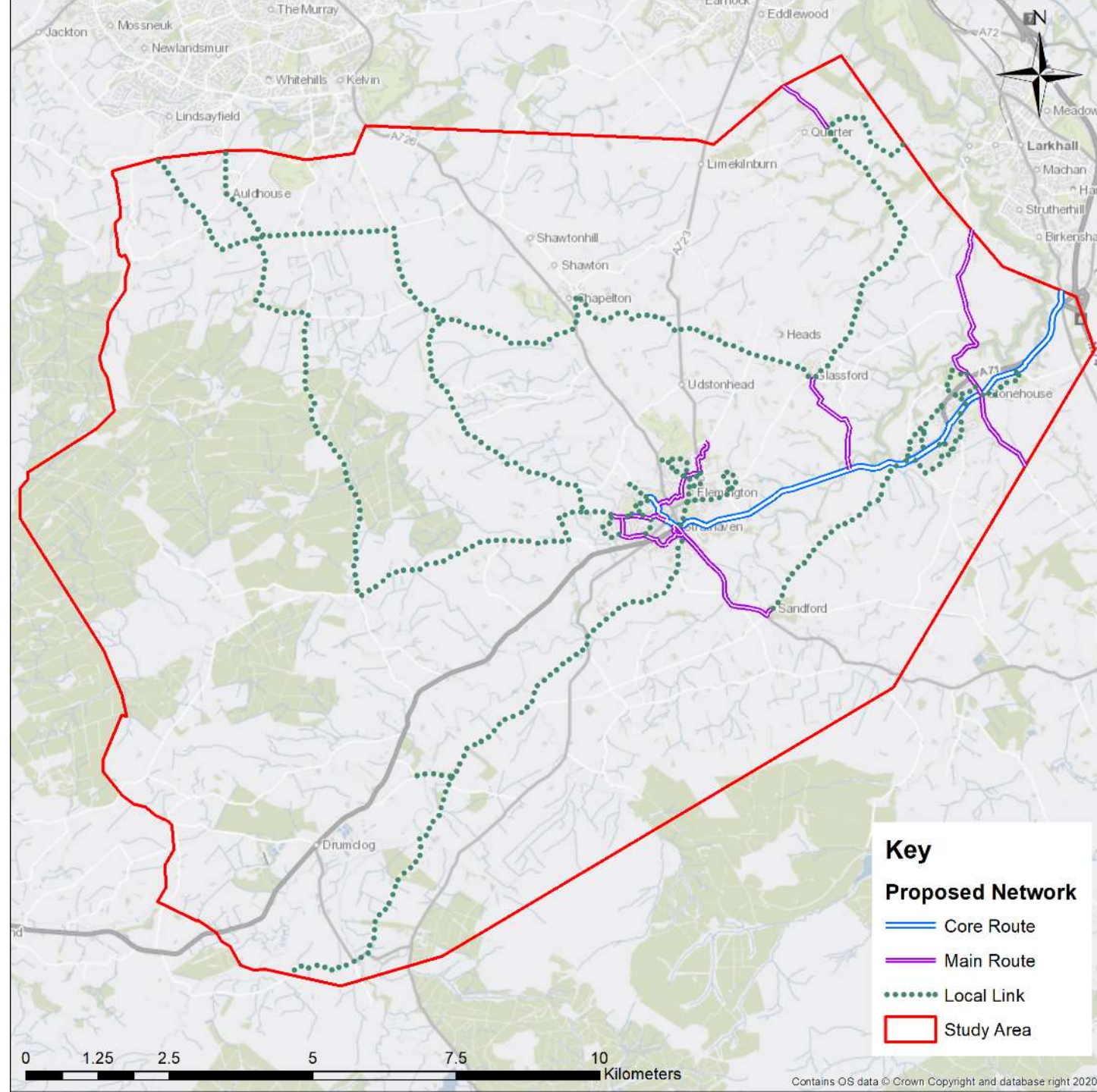
## Core Design Principles:

- Cohesion
- Directness
- Safety
- Comfort
- Attractiveness
- Adaptability / Future-proofing
- Accessibility

# Future Network Proposals

Proposed network is split into 3 categories:

- **Core Routes:** these will include the proposed strategic cycle connections linking both within and beyond the study area along the main arterial routes.
- **Main Routes:** these will include further connections to major trip attractors such as schools, shopping centre and areas of employment and link to the wider and more strategic Core Routes.
- **Local Links:** will include additional links to local destinations and connect communities and local destinations that are not within close proximity to the propose Core and Main routes.



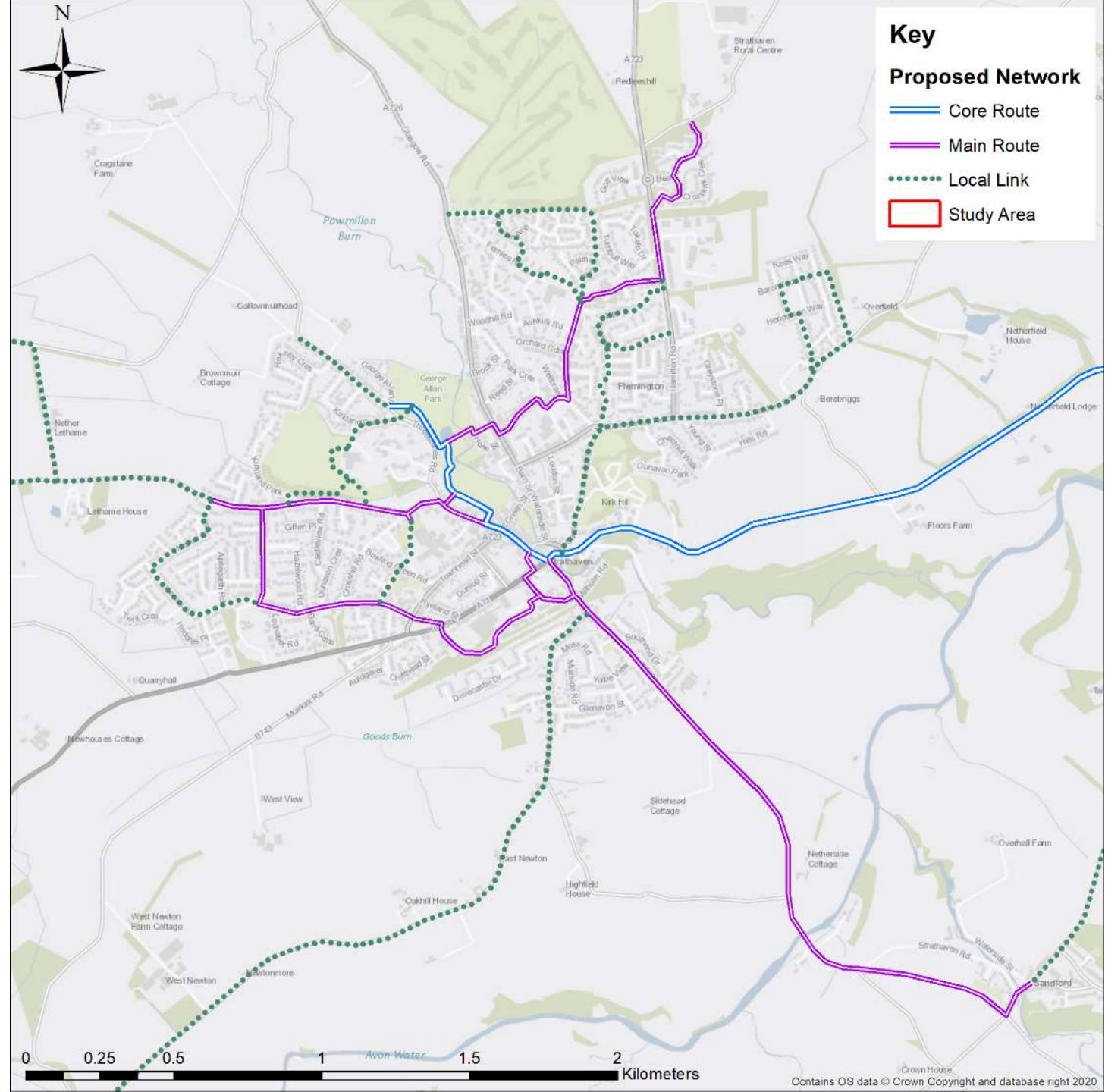
# Proposed Network: Strathaven

## Core Route

- Links the Common Green heading east along the A71 and north linking through John Hastie Park, George Allan Park and Kirkland Park providing key links to the north of Strathaven.

## Main Route

- Link south from the town centre to Sandford Village
- Link west from the town centre through neighbourhoods to the west of the town and to Kirkland Park
- Link north-east from George Allan Park through the Flemington neighbourhood to the northern most part of the town



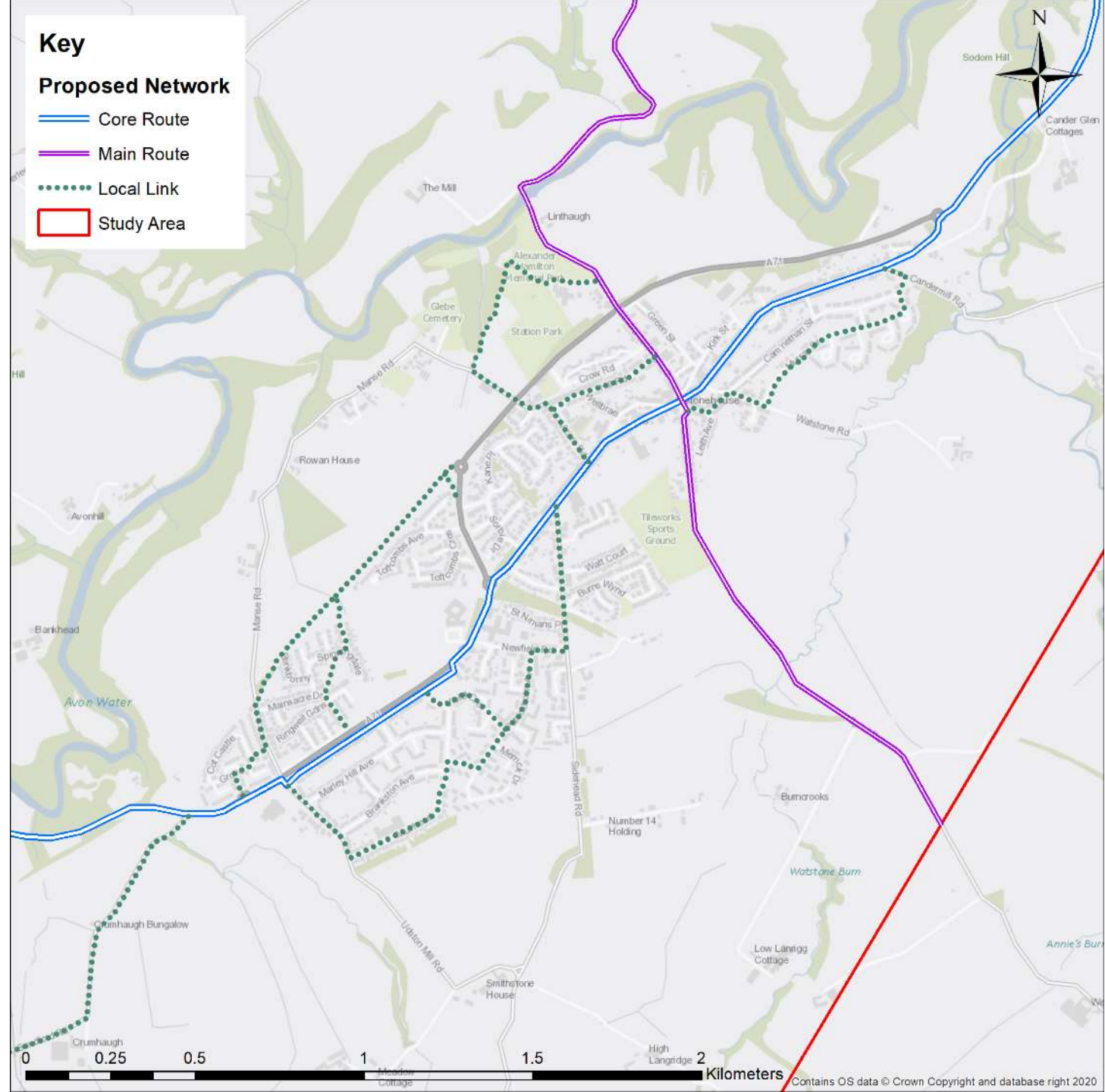
# Proposed Network: Stonehouse

## Core Route

- Links from south west to the north east of the town acting as a core spine

## Main Route

- Links north – south along the existing alignment of the NCN74 linking through the town centre at The Cross

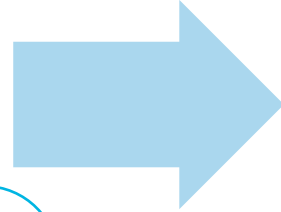


# Next Steps

2020 / 21

## Current Works

- Review Stakeholder Feedback
- Review Public Feedback
- Finalise and Publish Feasibility Study



2021 / 22 and beyond

## Future Works

- Development of proposed routes and networks in partnership with Sustrans and in consultation with local communities

# Workshop Sessions

## 1. Barriers to Active Travel

What do you think are the main barriers to more walking, cycling and wheeling in Strathaven, Stonehouse and the surrounding villages?

## 2. Local Assets

What assets could we build upon to make the town more accessible for walking, wheeling or cycling?

## 3. Known / Planned Changes

Are there any planned changes or interventions you are involved in or know about that could be relevant to active travel improvements locally?

## 4. Ideas / Suggested Improvements

Do you have any ideas for specific improvements which would make a big difference to walking, cycling or wheeling locally?

## 5. Further Comments

Do you have any further comments?



**Thank you for your  
time**

**If you have any further questions or  
would like to get in touch please  
contact:**

**[Ross.McNeill@aecom.com](mailto:Ross.McNeill@aecom.com)**





**AECOM**

Imagine it.  
Delivered.