

Local Development Plan Newsletter

In this issue...

Proposed LDP2 Examination **P.1**

Planning Guidance Update **P.2**

Circular Economy Strategy **P.3**

Parking Management Plan **P.4**

Proposed Local Development Plan 2 – Report of Examination

The Council has now received the Report of Examination on the Proposed Local Development Plan 2 from the Scottish Government’s Planning and Environmental Appeals Division (DPEA).

The Report of Examination can be viewed via the following link:

[LDP-200-3 \(East Dunbartonshire Local Development Plan 2\)](#)

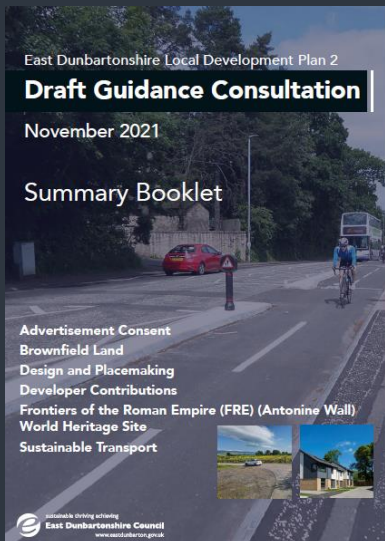
The Reporter examined a total of 38 issues which can be summarized as follows:

- Issue 1: Development Strategy
- Issues 2-8: Community Strategies (Non–housing)
- Issues 9-24: Subject Policies
- Issue 25: Environmental Report
- Issues 26-37: Housing Land and Designated Housing Sites by Community
- Issue 38: Miscellaneous

Planning regulations require Councils to formally notify the Scottish Government of their intentions to adopt their Local Development Plan within 3 months of receiving the examination report.

The Reporter has made a number of recommendations on the plan – the list of modifications can be found using the link above. These are currently being considered by the Land Planning Policy Team and will be reported to Council.

The Council’s response to the examination report and procedure for adopting the plan will be reported in a future newsletter.



Planning Guidance Update

Consultation 19 November 2021 until 14 January 2022

As reported in Newsletter 66, a consultation on the preparation of six guidance documents was undertaken from 19th November 2021 to 14th January 2022. All six pieces of guidance are to replace existing documents where various changes have been made to reflect the updated policies and strategy within the forthcoming Local Development Plan 2, and other changes since each guidance was last prepared. The guidance documents subject to the consultation were:

- Advertisement Consent (Planning Guidance)
- Brownfield Land (Planning Guidance)
- Design and Placemaking (Supplmentary Guidance)
- Developer Contributions (Supplmentary Guidance)
- Frontiers of the Roman Empire (FRE) (Antonine Wall) World Heritage Site (Supplmentary Guidance)
- Sustainable Transport (Planning Guidance)

A total of 27 responses were received and has resulted in some further updates being made to the guidance. Final versions of the guidance were approved at committee on 07 June 2022. Information on the comments received, the Council's response and the procedures for adopting the guidance can be found in the Place, Neighbourhood and Corporate Assets committee report which can be accessed using the link below:

<https://www.eastdunbarton.gov.uk/council/committees-councillors/search-documents/current-committee-documents-search>

Preparation of Further Guidance

As work to replace the existing suite of guidance continues, the Land Planning Policy Team are currently working on preparing guidance on:

- The Water Environment and Flood Risk Management; and
- Amendments to the current Green Infrastructure and Green Network Supplementary Guidance.

Further details on timescales and consultation procedures will be provided in a future newsletter.



Draft Circular Economy Strategy

The actions for East Dunbartonshire's Draft Circular Economy Strategy are currently in development. The project is being led by the Council, in collaboration with East Dunbartonshire Economic Partnership and the local business community. It ties in with work on the Council's Economic Recovery Plan, Climate Action Plan, Local Heat and Energy Efficiency Strategy, and Active Travel Strategy.

A Circular Economy is one in which all waste is minimised as far as possible, with materials being kept in use or repurposed. More information can be found on the [Circular Economy Strategy](#) page on the Council website.

The actions being drafted will set out how the Council as an organisation will become more circular, work with community partners to promote Circular Economy principles to businesses, and provide people living and working in East Dunbartonshire with information on how they can support sustainable businesses and help to reduce waste.

When a Draft Strategy has been developed, it will be made publicly available for consultation. However, if you have any suggestions for what you hope to see in the Draft Strategy, you can get in touch in the meantime through this online webform:

<https://www.eastdunbarton.gov.uk/residents/planning-and-building-standards/planning-policy/economic-development/circular-economy#overlay=webform/suggestions-draft-circular-economy-strategy>

Contacting us

Email

Development.plan@eastdunbarton.gov.uk

Postal Address:

Land Planning Policy
East Dunbartonshire Council
Broomhill Industrial Estate
Kilsyth Road
Kirkintilloch
G66 1TP

Telephone (Council Customer Services): 0300 123 4510

Privacy Notice

The Council has a separate privacy notice for both Land Planning Policy (Planning) and Land Planning Policy (Transport and Economic Development Policy) which can be found on the main 'Privacy Notices' section of the Council website [here](#)

Parking Management Plan

After some amendments made following the consultation on the Draft Parking Management Plan. The Parking Management Plan was approved in June 2022. Consultation details and results can be found in the Report of Consultation – see link below). One of the Plan's purposes is to inform of roles and responsibilities for parking management and enforcement in East Dunbartonshire. The Plan's eighteen policies belong to five categories: overarching parking policy, electric vehicles, town centres, rail stations and schools.

The Plan's approval means that the Parking Management and Schools Access Hierarchies can now be referred to. The Parking Management Hierarchy outlines how the Council reacts and manages parking issues as they arise. The Schools Access Hierarchy provides a blueprint for students, parents and schools to understand the most desirable school transport arrangements.

An important element of the Parking Management Plan, illustrated by the Schools Access Hierarchy, is the promotion of sustainable transport as a means of getting to and from school with the aim of creating safer, healthier and cleaner air environments around schools. A measure which has been shown in other places to help achieve this is traffic-free schools. The Parking Management Plan's schools policies state that traffic free schools schemes will be explored, piloted and implemented based on schools' circumstances and needs. Several pilot schemes will be implemented and, throughout the process, school communities will play an active role in providing feedback on and shaping the future of these schemes.

The Parking Management Plan is [available online](#) (see full link below) and paper copies will be made available at community hubs / Libraries.

<https://www.eastdunbarton.gov.uk/residents/roads-pavements-and-parking/parking/parking-management-plan>

